

# BEM Series

## BMX Series and Team Points Calculator.

The Series program is used to calculate series points based on Classes and / or Teams for up to twenty two individual BMX events. The Series program obtains the race result information from Event files generated by the companion Bmx Event Manager (BEM) program.

Reports are provided to screen, printer, clipboard, HTML file or exported to a CSV or TAB delimited file.

**East Anglia Regional Team Series 2002**  
Report Created 23/05/02 12:16:45

Series Summary

TEAM SUMMARY after 4 of 8 Rounds

| RANK | NAME            | TOTAL |
|------|-----------------|-------|
| 1    | M.K. Crew       | 1537  |
| 2    | Royston Rockets | 1449  |
| 3    | Bramtree        | 1432  |
| 4    | Norwich Flyers  | 1425  |
| 5    | Ipswich         | 1388  |
| 6    | Peterborough    | 1370  |
| 7    | Dunstable       | 1288  |

[Top of Report](#)

**6&U 10 Riders.**

| RANK | NAME             | CLUB            | TOTAL After 4 of 8 Rounds |      | RESULT POINTS |    |    |    |    |   |   |   |   |   |
|------|------------------|-----------------|---------------------------|------|---------------|----|----|----|----|---|---|---|---|---|
|      |                  |                 | BEST 6                    | RACE | 1             | 2  | 3  | 4  | 5  | 6 | 7 | 8 |   |   |
| 1*   | Thomas Hall      | Bramtree        | 196                       | 196  | 46            | 50 | 50 | -  | -  | - | - | - | - | - |
| 2*   | Isabelle Ferrada | M.K. Crew       | 161                       | 161  | 42            | 41 | 39 | 39 | -  | - | - | - | - | - |
| 3*   | Nathan Hastings  | Peterborough    | 136                       | 136  | 38            | 34 | 34 | 30 | -  | - | - | - | - | - |
| 4*   | William Rhodes   | Royston Rockets | 131                       | 131  | -             | 46 | 43 | 42 | -  | - | - | - | - | - |
| 5*   | Zach Stevens     | Bramtree        | 125                       | 125  | -             | 44 | 35 | 46 | -  | - | - | - | - | - |
| 6*   | Nathan Clarke    | Dunstable       | 102                       | 102  | -             | 35 | 31 | 36 | -  | - | - | - | - | - |
| 7*   | Luke Gibson      | Royston Rockets | 83                        | 83   | -             | 38 | 45 | -  | -  | - | - | - | - | - |
| 8*   | Monique Sewell   | Bramtree        | 67                        | 67   | -             | 34 | -  | 33 | -  | - | - | - | - | - |
| 9#   | George Hawker    | Dunstable       | 30                        | 30   | -             | -  | -  | -  | 30 | - | - | - | - | - |
| 10#  | Shae Stockwell   | Bramtree        | 29                        | 29   | -             | 29 | -  | -  | -  | - | - | - | - | - |

\* = not yet qualified, # = can't qualify. Must enter 6 of rounds 1,2,3,4,5,6,7,8 to qualify.  
Best 6 results are from rounds 1,2,3,4,5,6,7,8.

### Sample HTML Team Summary and Class Detailed Reports

English, Spanish, French, German, Italian and Portuguese Language Options

Document date: 25<sup>th</sup> March 2020  
Applicable to Series Program with  
minimum versions: 3.10.7 and 3.11.1

## Series Program Version 3.10.x and 3.11.x Table of Contents

|  |    |
|--|----|
| Series Program Version 3.10.x and 3.11.x Table of Contents .....       | 2  |
| SERIES Program Overview .....  | 3  |
| SPECIFICATIONS .....   | 3  |
| Files .....  | 6  |
| Installation .....   | 6  |
| OVERVIEW USER GUIDE .....  | 7  |
| SERIES EVENT SET UP .....  | 7  |
| BEM and BSR Relationships .....  | 7  |
| DETAILED USER GUIDE .....  | 8  |
| SET UP NEW SERIES EVENT .....  | 8  |
| RUNNING THE PROGRAM .....  | 16 |
| Error and Information Messages .....                                   | 22 |
| Appendix 1, Update History .....                                       | 23 |
| Appendix 2, Relationship between BEM and BSR Data .....                | 25 |
| Appendix 3, Relationship between SportScore Results and BSR Data ..... | 26 |

## **SERIES Program Overview**

The Series program uses the results from user selected .BEM event files or from SportScore result files to calculate riders Series and /or Team points. Points can be awarded for results and / or bonuses. The program allows the user to adapt the points and bonuses awarded, number of rounds, minimum rounds to enter and best points from a number of rounds to cater for a wide range of requirements. Some examples are the Victorian Metro Plate and Track Attack Series, British Regional and National Series, Canada Cup, Canada Provincial Points, European Fall Cup Series, UCI Continental Ranking and UCI BMX Team Points.

## **SPECIFICATIONS**

### **Applicable Rounds**

1. The series can comprise up to 22 two individual rounds.
2. Each round can be flagged mandatory or non-mandatory for Series Award qualification. Eg for the Victorian Metro Plate, riders must compete in any five of the first seven rounds and must compete in the final round to qualify for the Series Award.
3. Four "Compete in Groups" allow for specifying a minimum number of non-mandatory rounds in each group that a rider must compete in to qualify for the series.  
E.g. Must compete in 3 of rounds 1, 2 and 5 and 2 of rounds 3, 4 and 6.
4. Four "Best Of Groups" allow for rounds to be flagged for "best-of" point's calculation where worst results are dropped. Eg for Victorian Metro Plate, the best five scores from the first seven (plus the final round) count towards the Series or for the UCI Continental Series Points where the best 2 of 3 Classic Rounds plus the best 5 of any number of Class 5 events count.
5. Each round has a "multiplier" to allow for nominated rounds to be set for example to double or triple points.

### **Bonus Points.**

Bonus Points can be specified on a per round basis for the following:

1. Bonus for entering a round.
2. Bonus for competing in the round.
3. Bonus for starting each moto.
4. Bonus for making the semi finals.
5. Bonus for making the quarter finals.
6. Bonus for making the eighth finals.
7. Bonus for making the sixteenth finals.
8. Bonus for entering all rounds of the series.
9. Bonus for competing in all rounds of the series.
10. Bonus points based on the number of valid riders in the class.
11. Bonus points based on the earliest qualifying round. (i.e. UCI Team Points).

### **Race Result Points**

1. Each Class or Team can individually select one of four Points Translation Pages.
2. Each Translation Page has four results to series point's translation tables. Separate tables can be selected (but applicable to all Translation Pages) for each round for moto, sixteenth, eighth, quarter, semi and finals results.
3. Each round can select one of 16 user configurable points tables on the Overall Place Points worksheet to award points for overall placing up to 100.
4. Each Class and Team has an individual multiplier (normally set to 1) that is individually applied to points earned from race results. These can be used for handicap competitions (eg Victorian Interclub where the total team points have a factor applied based on the percentage of the Club's licenced riders entered. This feature is also used for the Canada Cup where Novice, Intermediate and Expert classes use different points.
5. The number of pre-final motos for series calculation is defined separately for each round.
6. Sixteenth, Eighth, Quarter, Semi and Finals can be flagged in or out for each round.
7. The default Class and Team result based points are awarded on a per-race basis. The races used for any series (or any round of a series) is user configurable. Eg for Victorian Metro

Plate, series result points are accumulated from Motos 1-3 only.

The program also conforms to the British Cycle Federation National Series 2002 (non moto rotation) by using series codes of BCF-CLASS and BCF-TEAM where series moto points are awarded on ranking after three motos plus series final points for overall finishing position.

8. Points from the final round can be based on actual race results or where two or more classes are combined for racing, the relative finishing position in the rider's series class.
9. For a class without finals, in a series where points are awarded for places in the final, points from the final table can be awarded for overall place in the class.
10. The same number of points can be awarded to all riders in a class who do not make the main final.
11. Points can be awarded for placing in the class at the end of the pre-qualifier motos.
12. Points can be awarded for overall place (up to 100<sup>th</sup>) in a Class.
13. Points can be awarded for placing (up to 100<sup>th</sup>) in a Time Trial.
14. Points can be awarded in a Time Trial based on the number of entries in the Class.

## Combined Classes

1. A rider's Series Class may be different from the class they are actually competing in at any round. Eg where there are insufficient numbers to form a class. For the default Class and Team settings, the results based series points are calculated from the actual results in the class the rider competes in.  
Where Finals\_Points\_Type is set to "S" (series) and for BCF-CLASS and BCF-TEAM, moto based series points are based on the raced class with final based series points based on the rider's ranking in their Series Class.
2. For Time Trial results based on either Overall Place in Time Trial or Points of Number in Class:  
Where Time\_Trial\_Points\_Type is set to "S" (Series), points are based on the placing / number of riders in the Series Class.  
Where Where Time\_Trial\_Points\_Type is set to "R" (Raced), points are based on the placing / number of riders in the Raced (combined) Class.
3. The rider's Entered Class Number is set in BEM Event File when the rider is initially entered in the event. With any subsequent combining of classes to make up minimum class numbers using the Merge Classes option in BEM, the Entered Class Number (used for Series scoring) does not change.
4. With the exception of the Series\_Code CCA-NIE-CLASS (Canadian Cycling Association, Novice, Intermediate or Expert Class), the Series Class the rider is placed in the Class they entered for the first round of the series that they competed in.  
For the Series\_Code CCA-NIE-CLASS, to cater for riders promoted from Novice to Intermediate or Intermediate to Expert during the series, the Series Class is based on the class the rider entered for the last round of the series they competed in.
5. To cater for rules such as the UCI Ranking Series where combined (Junior and Elite) classes use a different points scheme, an alternate points table can be nominated for combined classes.

## Team Scoring

1. Where Teams are listed for scoring, all individual rider's points are calculated as for series points. Team scores are then calculated from the team members. Each team can have any number of riders.
2. The user can specify the maximum number of riders on an individual round basis where the "best-of" scores count towards the team total. Eg A team has six riders but only the best four scores count towards the team total.
3. For an individual meeting where team scoring is required, it becomes in effect a one round series.
4. A rider can be a member of up to four teams in the one event, eg Club, State and Corporate. Where more than one Team Competition is run on the same event(s), separate BSR files are required for each Competition and there can not be any overlap in the REF\_NO (Team Number).
5. To include riders in a team, the team "Ref\_No" from the BSR file Series Sheet is entered for each team member in the "Team\_No", "Team2\_No", "Team3\_No" or "Team4\_No" field in the relevant BEM file(s).

6. You can do both series and team scoring in the one BSR series file if the same point's scheme is used for both class and team series scoring. In the writer's experience, this rarely seems to be the case in practice.

## **Files**

### **Program Files**

Note that all program files are installed into the folder as specified in the applicable Release and Installation Note when running the installation .MSI file with a shortcut provided to the **Series2K3.XLS** program file.

### **Series Event Files (XL Workbook)**

#### **PROFORMA2K3-52.BSR**

This workbook located in the C:\BEM\Programs\Event\3.10.x folder is a template to create Series or Team specific workbooks by copying and renaming this file, eg Metro\_Plate.BSR. The BSR (BMX Series Report) files can be in any convenient directory, eg C:\BEM5\SERIES. The .BSR workbook contains six worksheets.

**SERIES** worksheet containing event specific information that can be edited for the following user specific requirements.

- Series Class or Team Competition Name.

- A Short Name for the Class or Team

- The Series Sponsor name (if required) to include at the top of reports.

- The Series Administrator's name (if required) to include in the reports

- If finals points are used, if they are awarded on race results or series class relative position.

- Which races for each round count towards the series points.

- Which points tables are used for each stage of racing.

- How bonus points (if used) are allocated and from which rounds.

- Mandatory and non-mandatory rounds.

- If worst result scores are dropped.

- For team competitions, how many team members points count (eg best 4 scores).

- List of Classes from the event files to have series points calculated.

**POINTS** worksheets (4) that each has six results to series points translation tables. All can be edited as required for the user requirements.

**Overall\_Place\_Points** worksheet that has 16 tables to translate overall place in the class, at the end of motos or in the Time Trial (from 1 to 100) into series or team points.

**S\_RIDERS** worksheet is a database of riders and their results. Not used by the operator.

## **Installation**

Refer to the package version specific Release and Installation Notes.

# OVERVIEW USER GUIDE

## ***SERIES EVENT SET UP***

This section contains an overview and recommended sequence of the steps required when setting up a new Series or Team file. More detail is provided in the Detailed User Guide section later in this document.

1. Create the Series Workbook by copying and renaming the PROFORMA2K3-52.BSR file located in the **C:\BEM\Programs\Event\3.10.x** folder.
2. Open the series file from Excel and edit the series configuration data in the SERIES Worksheet and if required the series points in the POINTS Worksheets. Save the changes then close the series (.BSR) file.
3. Open the Series2K3.xls file and select the new Series workbook.
4. Using the **Add Event** button, select the event file(s) that make up the series.
5. Generate the required reports.

## ***BEM and BSR Relationships***

The Series program obtains its input data from individual .BEM Event files. To identify the same rider from individual rounds, with the exception of CCA-NIE-CLASS, Series2K requires an **exact match** on Entered\_Class\_No, Licence\_No, Last\_Name and depending on the operator selected criteria First\_Name. See Appendix 1 for a diagrammatic presentation of this relationship.

Therefore it is mandatory to have consistency with the data in individual BEM event files that make up the series including the case format of the names. In the writer's experience and particularly if different entry administrators are used for each round, this may not always be easy to achieve. Some hints are presented here from the writer's experience with the Victorian Metro Plate.

1. Add entries from a rider list file (most users already do this).
2. Don't edit the names. If you normally change first names, ie changing Nathaniel to Nat then ensure the rider matching option to exclude the First\_Name is selected.
3. For each individual round, enter riders in the Class they will accumulate points for the series in. Don't anticipate a merged class (typically Cruisers and Girls classes). Use the BEM Merge Class function from the main menu screen to merge classes to make up minimum number requirements.
4. If an error is made and the rider is entered in the wrong race class, use Review Entries and not Edit Entries in BEM to correct the error. (Review Entries changes the setting of the Entered\_Class\_No).
5. For new riders who haven't been advised of their licence number and are not included in the rider list file (most of the inconsistencies were due to this).
  - allocate them a temporary unique licence number for the series, eg MP001, MP002 etc.
  - update the rider list file with their details ie Update\_Details button on the Add Entries screen.
  - pass the updated rider list file on to entry administrators for subsequent rounds.
6. If possible, allow riders to enter the complete series with their round one entry. Put these rider in a separate All\_Rounds.BEM file and merge these entries with the individual round files (ie. in the BEM Add Entry screen, select the All\_Round.BEM file as the rider list file then Add All).
7. With the degree of flexibility provided for user to configure the series scoring, there is a risk of not getting it quite right. Recommended action after creating a new Series file, particularly if you are using a previously untried configuration (number of rounds, bonus points, mandatory rounds, points tables used etc.), use test events or previous event files to check the series points calculations are as expected.

## **DETAILED USER GUIDE**

### ***SET UP NEW SERIES EVENT***

#### **Create the Series Event Workbook**

A unique workbook is required for each Series based on the supplied proforma. Create the Series workbook by:

Copy PROFORMA2K3-52.BSR from the C:\BEM\Programs\Event\3.10.x folder then rename as ???????.BSR using file manager, XTree or Windows Explorer.

OR

From EXCEL, open the file PROFORMA2K3-50.BSR

Save the file as ???????.BSR (XL workbook format) where ???????? is an arbitrary name to identify the file EG Metro\_2002.BSR for Metro Plate 2002.

NOTE: File must be saved as WORKBOOK. Enclose the file name in quotes, eg "Metro\_2002.BSR" to prevent Excel adding a .XLS or .XLSX extension giving a file name of eg Metro\_2002.BSR.XLS.

Note that some versions of Excel may still add an .xls or .xlsx extension when saving then file so that you end up with something like Metro\_2002.BSR.xls

If this happens then you need to re-name the file using Windows Explorer to remove the .xls extension.



## Configure the SERIES Worksheet

### SERIES EVENT DETAILS

The following data can be edited on the SERIES worksheet in the .BSR Workbook for the series / team competition requirement.

#### REPORT and TEAM SET-UP

- **Series\_Name**. Enter the event name to be printed on reports. Eg European BMX Fall Cup Series 2001.
- **Series\_Sponsor**. Enter details here to be included at the top of each report. Leave blank if not required.
- **Series\_Administrator**. Enter details here (if required) of the contact name and details of the Series Administrator to be included in HTML reports.
- **Team\_Comp\_1\_Name**. Where Team scoring is used, enter the name of the first Team Competition,. E.g. Club Team Competition.
- **Team\_Comp\_2\_Name**. Where applicable, enter the name of the second Team Competition,. E.g. State Team Competition.
- **Team\_Comp\_3\_Name ... Team\_Comp\_6\_Name**. Where applicable, enter the name(s) for the third to sixth Team Competition.
- **Print\_Paper\_Size**. Paper size used for printing reports. Enter the value corresponding to the required xlPaperSize setting, eg 1=Letter, 9=A4. Refer to Excel help on PaperSize Property for further details.
- **Number\_of\_Rounds**. Enter the number of rounds that make up the complete series, eg 6. This entry is used to format reports and to limit the number of individual events that can be added to the series.
- **Rank\_on\_Points\_Only**. Determines how the rider ranking for each class is determined. Set to "Y" to rank riders on Total Points only. When set to "N", riders qualified for a series award (by having competed in the required number of rounds) will be ranked higher than riders who may still qualify for a series award who in turn will be ranked higher than riders who can't qualify for the series award. Within each of these three groupings, riders are ranked on Total Points.
- **Final\_Points\_Type**.  
For a BEM Event File, where points are awarded from the final round of racing (Count\_Final, Count\_B\_Final, Count\_C\_Final or Count\_D\_Final) or when Overall\_Place\_Points or Overall\_Place\_After\_Motos, allows the results to be based on race results or if classes are combined for racing, relative to finishing position in the series class.  
Set to "S" for final points to be relative to the rider's Series Class.  
Set to "R" for final points to be strictly on Race results.  
  
For a SportScore Results file where multiple categories are included in the one results file such as where several grades compete in the one road race, this setting determines how the Overall Place Points are calculated:  
Set to "S" for overall place to be determined by position in the Riders Class or Grade  
Set to "R" for final points to be on actual finishing position in the combined.
- **Time\_Trial\_Points\_Type**.  
For an event where Series Points are awarded for a Time Trial based on either Overall\_Place\_in\_TimeTrial or TT\_Points\_on\_Number\_in\_Class, this setting allows the results to be based on Time Trial results as raced or if classes are combined for racing, relative to finishing position in the series class.  
Set to "S" for final points to be relative to the rider's Series Class.  
Set to "R" for final points to be strictly on Race results.
- **Points\_Sheet\_Combined\_Classes**. This setting (applicable to classes only, not teams) allows for an alternate points sheet and alternate factor to be used where the Class has been combined to make up the minimum numbers. Not applicable for teams.  
Enter "N" to always use normal Points Sheet for classes (usual scenario).  
Enter "Y" if alternate Points Sheet used for combined classes, eg UCI Cat 3 Ranking Rounds.

## RESULTS to SERIES POINTS

Note that the points table numbers entered here apply to all POINTS worksheets. Eg if table 1 is entered for Count\_Motos, then table 1 will be used for motos on irrespective of which POINTS worksheet is used for the Class or Team.

- **Count\_Motos**. For each round in the series, enter the number of pre-final motos used to calculate results based series points. Eg 3.
- **Moto\_Points\_Table**. For each round, enter the points table number (1-6) used to calculate results based points for pre-final motos.
- **Series\_Relative\_Finals\_Points**. For each round where Series Relative Final Points are awarded, i.e. points from the Final table based on overall ranking in the Series Class which may not be the same as the Raced Class when undersubscribed classes are merged. Applicable where Finals\_Points\_Type = S and Count\_Finals table(s) are used. Enter A if points awarded to All riders or F where points only awarded to finalists:
- **Count\_Sixteenths**. For each round, if Sixteenth Finals results count towards series points, enter the point's table to be used (1-6), else enter N. Not applicable for BCF-CLASS.
- **Count\_Eighths**. For each round, if Eighth Finals results count towards series points, enter the points table to be used (1-6), else enter N. Not applicable for BCF-CLASS.
- **Count\_Quarters**. For each round, if Quarter Finals results count towards series points, enter the point's table to be used (1-6), else enter N. Not applicable for BCF-CLASS.
- **Count\_Semis**. For each round, if Semi Finals results count towards series points, enter the points table to be used (1-6), else enter N. Not applicable for BCF-CLASS.
- **Count\_Final**. For each round, if the Main / Expert / A Final (for places 1-8) results count towards series points, enter the points table to be used (1-6), else enter N.
- **Count\_B\_Final**. For each round, if the B / Consolation / Invitation 1 Final (for places 9-16) results count towards series points, enter the points table to be used (1-6), else enter N.
- **Count\_C\_Final**. For each round, if the C / Invitation 2 Final (for places 17-24) results count towards series points, enter the points table to be used (1-6), else enter N. Not applicable for BCF-CLASS.
- **Count\_D\_Final**. For each round, if the D / Invitation 3 Final (for places 25-32) results count towards series points, enter the points table to be used (1-6), else enter N. Not applicable for BCF-CLASS.
- **Overall\_Place\_Points**. For each round where points are to be awarded based on overall place, enter the table number (1 – 16) on the Overall Place Points worksheet to be used, else enter N if this is not to be used for the round.
- **Overall\_Place\_After\_Motos**. For each round where points are to be awarded based on overall place in the class at the completion of the motos phase. Where association rules specify an additional moto for classes of 8 or less, set Motos\_Overall\_Phase to indicate if the calculation is made on pre-finals motos or after the additional moto. Enter the table number (1 - 16) on the Overall Place Points worksheet to be used, else enter N if this is not to be used for the round.
- **Motos\_Overall\_Phase**. For each round where points are to be awarded based on overall place in the class at the completion of the motos phase, enter M if points are after the motos phase (pre-final) or E if points after extra moto where that is run for classes without a final
- **Overall\_Place\_in\_TimeTrial**. For each round where points are to be awarded based on overall place in the class at the completion of the Time Trial(s), enter the table number (1 - 16) on the Overall Place Points worksheet to be used, else enter N if this is not to be used for the round.
- **TT\_Points\_on\_Number\_in\_Class**. For each round where points are to be awarded for Time Trial results based on the number of entries in the Class, enter Y, else enter N if this is not to be used for the round.  
E.g. The winner of the Time Trial gets the amount of points equal to the number of riders in the Class. For example a class with 16 riders, 1<sup>st</sup> place = 16 points, 2<sup>nd</sup> place = 15 points and so on.
- **Result\_Type**. Note that this field is only applicable for SportScore Excel Results Files. Enter R if the round is to score Riders results or T if the round results are a Teams Result such as a Team Time Trial.

- **Round\_Short\_Name**. You can enter a short, 4 character maximum name for each round here that is shown in HTML reports to make easier identification of which round is which in multi round series.

APPLICABLE ROUNDS for RESULTS BASED POINTS

- **Mandatory\_Rounds**. For each round, enter “Y” if entry in the round is mandatory to qualify for a series award. Enter “N” for rounds that are non-mandatory to qualify for a series award (ie optional).
- **Compete\_in\_Groups1 to 4**.

The Compete in Groups allow the series to be broken up into up to four sub groups for specifying which of the non-mandatory rounds a rider must compete in to qualify for a series award. If all rounds are mandatory then set all Minimum\_Compete\_in\_Group value to 0.

Where Compete-in\_Groups are to be used, you must allocate the groups starting from 1. Any unused group must have it's Minimum\_Compete\_in\_Group value set to 0.

For each Compete\_in\_Group to be used, set it's Minimum\_Compete\_in\_Group value to the minimum number of rounds in the group that a rider must compete in to qualify for the series and flag rounds applicable to the group to Y with all rounds not part of the group set to N.

Any round flagged as non-mandatory may be included in more than one group.

- **Best\_Of\_Groups1 to 4**. The Best Of Groups allow the series to be broken up into up to four sub groups for specifying the Best Results from which rounds count towards the total Series Points.

Where Best Of Groups are to be used, you must allocate the groups starting from 1. Any unused group must have its Best\_Num value set to 0.

For each Best Of Group to be used, set its Best\_Num value to the number of rounds in the group that the best results points are to apply and flag rounds applicable to the group to Y with all rounds not part of the group set to N.

You can not allocate any round to more than one Best Of Group.

## BONUS POINTS

- **Bonus\_Mode** . This setting allows for two options in the way bonus points are counted.
  1. Enter "G" for Global Mode. With this setting all bonus points from all rounds count towards the series total and are not adjusted for dropped rounds under the "best of" option.
  2. Enter "R" for Round Mode. With this setting, the bonus points for each round are added to the race results points to obtain the round total. Where rounds are dropped under "best of" rules (eg result from the best 5 of 7 rounds count towards the Series Total), both bonus and results based points will be dropped.
- **Compete\_in\_All\_Rounds\_Bonus** . If bonus points are awarded for riders who have entered **and competed** in all rounds of the series, enter the number of bonus points awarded, else enter 0.
- **Enter\_All\_Rounds\_Bonus** . If bonus points are awarded for riders who have entered all rounds of the series, enter the number of bonus points awarded, else enter 0.
- **Event\_Bonus** . For each round, if bonus points are awarded for entering the round, then enter the number of bonus points awarded, else enter 0.
- **Competing\_Bonus** . For each round, if bonus points are awarded for competing in the round (not just entering), then enter the number of bonus points awarded, else enter 0.
- **Moto\_Bonus** . For each round, if bonus points are awarded for starting in each moto, then enter the number of bonus points awarded per moto, else enter 0.
- **Sixteenth\_Bonus** . For each round, if bonus points are awarded for qualifying for the sixteenth finals, then enter the bonus points awarded, else enter 0.
- **Eighth\_Bonus** . For each round, if bonus points are awarded for qualifying for the eighth finals, enter the bonus points awarded else enter 0.
- **Quarter\_Bonus** . For each round, if bonus points are awarded for qualifying for the quarter finals, enter the bonus points awarded else enter 0.
- **Semi\_Bonus** . For each round, if bonus points are awarded for qualifying for the semi finals, enter the bonus points awarded else enter 0.
- **Final\_Bonus** . For each round, if bonus points are awarded for qualifying for the final, enter the bonus points awarded else enter 0.
- **Riders\_in\_Class\_Bonus** . This feature allows bonus points to be awarded based on the number of valid riders in the class. A valid rider is one who has started in at least one of the qualifying motos. The bonus is calculated by multiplying the number of valid riders by the bonus value. For each round, if bonus points are awarded for the number of riders in the class, enter the bonus value per rider else enter 0.

### **Earliest Qualifying Round Bonus Points**

This group of Bonus points are primarily intended for use with Team Competitions run in accordance with UCI BMX Team Rules. Note that these Bonus Points are only awarded to riders who make the Main Final.

- **Class\_has\_Sixteenth\_Bonus** . For each round, if bonus points are awarded for classes that have Sixteenth Finals, enter the bonus points awarded else enter 0.
- **Class\_has\_Eighth\_Bonus** . For each round, if bonus points are awarded for classes that have Eighth Finals, enter the bonus points awarded else enter 0.
- **Class\_has\_Quarter\_Bonus** . For each round, if bonus points are awarded for classes that have Quarter Finals, enter the bonus points awarded else enter 0.
- **Class\_has\_Semi\_Bonus** . For each round, if bonus points are awarded for classes that have Semi Finals, enter the bonus points awarded else enter 0.

## ROUND MULTIPLIER

- **Results Multiplier** . Enter the multiplier value applied to the total points earned from **race results** for each round. Normally set to 1 but can for example be set to 2 where a particular round is a double points round.
- **Bonus Multiplier** . This is provided as an alternate to entering different bonus values for rounds where higher bonus points are awarded.  
Enter the multiplier value applied to the **bonus points** earned from for each round. Normally set to 1 but can for example be set to 2 where a particular round is a double bonus points round.

### TEAM RIDERS

- **Num\_Team\_Riders** . Enter the maximum number of riders from each team whose points count towards the team total. Eg if there are six riders in a team and the Num\_Team\_Riders is set to 4 then the best four individual results will count towards the team total.  
To count the totals from all riders in a team, set Num\_Team\_Riders 0.
- **One\_Rider\_Multiple\_Classes** . This setting give the option where a rider is in the one team in more than one class to allow Team Points to count from all classes from the one rider or from only the class with the highest points.  
Enter Y to count points for all classes from the one rider.  
Enter N to count the best points only for each rider in more than one class in the one team.

### EVENT FILES

No user input is required here. The program adds the required information when the user selects the "Add Event" option from the menu.

## APPLICABLE SERIES CLASSES & TEAMS

The table contains details for each Class and/or Team to have their points calculated. The entries must be in consecutive rows as the program interprets a blank row as the end of the table.

- **REF\_NO**. This reference number is the linking between the BSR series file and the BEM event file. The number **MUST** be unique for all Classes and unique for all Teams.  
For a `Series_Code` that relates to a Class, the reference is to the `Entered_Class_No` field in the BEM file. (or `Series_Class_No` in pre BEM97 versions).  
For a `Series_Code` that relates to a Team, the reference is to any one of the `Team_No`, `Team2_No`, `Team3_No` and `Team4_No` fields in the BEM file.
- **Class\_Team\_Text**. Text to be used in the Series Report. Note that this should match with the `Class_Text` in the BEM file to avoid confusion.
- **Short Name**. An abbreviated version of the Class or Team Name.
- **Series\_Code**. A code that defines the Class or Team type. Valid entries are:

### Class Series Codes

- CLASS**. Normal BMX class for calculation of series points based on results from each moto, optional for finals and optional bonus points.
- FINAL-POINTS-CLASS**. As for `Series_Code` of CLASS except that where the class does not have sufficient numbers for a final (eg 7 riders) and `Count-Final` is set to award Series Points for the final, the Series Final Points will be awarded on the basis of overall place based on moto points.
- NO-POINTS-CLASS**. Bonus points only are allocated, Eg Junior or Sprocket Class.
- BCF-CLASS**. Calculation of series points based on British Cycle Federation Series Rules. Note that this option should only be used for events with UCI or BCF non mixed moto draws and not with events using mixed rotation moto draws. This is because the BCF series points scheme for moto results assumes that the same riders have ridden together in all pre-final motos.
- CCA-NIE-CLASS**. This code is for Canadian Cycling Association, Novice, Intermediate and Expert 20" classes and was introduced to cater for the different points tables used for each skill level. Riders are awarded series points from the points table(s) applicable to the class they raced in. Eg if a Novice rider races in an Intermediate Class because of merges to make up minimum numbers, they will be awarded Intermediate points even though their Series Class is Novice. For classes without finals (single gate), points from the final table are awarded based on total points after the qualifying motos.  
Where a rider is promoted from for example 8 Novice to 8 Intermediate during the series, they will take all points earned as a Novice to the Intermediate Series Class.

### Team Series Codes

- TEAM**. Normal team competition where team points are based on results from each moto, optional for finals and optional bonus points.
- UCI-TEAM-RULES**. For scoring a team competition in accordance with the team rules in Appendix 1 of the UCI BMX Rule Book.  
Note that all other settings in the proforma such points tables, `Count_Moto` and `Earliest Qualifying Round Bonus` still need to be set up in accordance with the relevant UCI Team Rules.
- FINAL-POINTS-TEAM**. As for `Series_Code` of TEAM except that where the class does not have sufficient numbers for a final (eg 7 riders) and `Count-Final` is set to award Series Points for the final, the Series Final Points will be awarded on the basis of overall place based on moto points.  
Note: this Series Code is superceded by the Overall Place Points introduced in BEM version 2K3.1 but has been left to enable Series / Teams built on earlier templates to be run on the new version of the program.
- BCF-TEAM**. The `REF_NO` relates to `Team_No` in the BEM file to identify team members. Note that riders can only be in a BCF-TEAM if they are also in a BCF-CLASS. This requirement is to allow calculation of individual riders points based on the BCF Series Point's scheme.

- **Short Name** . Enter the Class or Team short name.
- **Class Type** . No operator entry is required here. The program will enter the Class Type data from the respective BEM file when required.
- **Points Sheet** . Enter the POINTS sheet number (1 - 4) to be used for the Class or Team.
- **Factor** . The value entered here is used as a multiplier for the points earned from race results for the Class or Team and is not applied to bonus points. Default value is 1.  
Examples of where a value other than 1 could be used are:  
Teams. The Victorian Inter-Club Competition (ie the Clubs are the Teams) modifies the total points earned by the percentage of licenced riders from the club who have entered the event. Eg if 75% of licenced riders from the Club have entered then Factor would be .75.
- **Alt Points Sheet and Alt Factor** . Applicable to Class Series Codes only when `Points_Sheet_Combined_Classes` is set to "Y" to allow a different Points Sheet to be used if the class has been combined to make up minimum numbers. First use for the 2004-5 UCI Ranking Series points scheme.  
As an example, if the Elite Women's class consists entirely of Elite Women riders then the normal points sheet and factor are used. If however Elite Women's class had Junior Women riders also to make up minimum class numbers, the alternate points sheet and factor would be used.
- **Team Comp No** . Applicable to Teams Competitions only. Enter the Team Competition number (1-6) corresponding to the `Team_Comp_x_Name` that this team is competing in.

## Configure the POINTS Worksheets

### SERIES POINTS TABLES

Four individual POINTS worksheets are provided. Which one(s) are used is determined by the `Points_Sheet` setting for each Class or Team.

Each POINTS worksheet contains six points tables to convert results from the BEM file(s) to Series Points. The user can enter any point's scheme for their particular requirements. Two Drop-Down lists provide four options each for DNS (Did Not Start) and DNF(Did Not Finish) results. The user can change the points in all tables as required for their individual requirements. The selection of which table(s) are used (across all POINTS sheets) for any event is determined by the various `Points_Table` entries on the SERIES worksheet.

To the right of the tables is a single points entry used where points are given for Main Final, to give this many points to all riders not in the Main. Set to 0 (zero) if this feature is not required.

The table with the **Event** heading is used to translate DNF and DNS results to a placing for series points therefore the points column in this table needs to reflect the Race Points (e.g. 1 for 1<sup>st</sup>) and not the Series Points.

### Overall Place Points TABLES

On the Overall Place Points worksheet, sixteen individual points tables are provided to convert overall placing (1 -100) into Series or Team points. Which table is used for any particular round is determined by the `Overall_Place_Points` setting for each Round.

## RUNNING THE PROGRAM



The installed desktop shortcut runs the file Series2K3.XLS to start the program. If Excel prompts to disable or enable macros, click on the “Enable Macros” buttons.

## Options

Each time a new Series File is selected, the options dialog is presented. Note that the Options selections can also be accessed from the Options button on the Main Menu.

### **Do Not Rebuild the Series on Opening Option**

This option allows the user to bypass the normal opening sequence where all data in the Series File is deleted and re-built from the individual round file(s).

Not normally used but provides an option where a Series has been set up (mocked up) with results from a non compliant race program.

### **Rider Matching Criteria across Series Events.**

The selections allow the user to select the matching criteria to be used to identify the same rider in separate round of a series. The second option removes the First\_Name from the selection criteria to avoid problems where the same rider was entered with a different first name in different rounds, Eg Thomas Smith and Tom Smith.

### **Tie Break Options.**

The following options are available for Series Tie Break where riders are tied on points at the end of the Series.

- No tie-break.  
I.e. riders with the same total points will be ranked equally.
- Use Placings in Finals – All Rounds.  
I.e. Tie-break for riders with the same total points will be:
  - First for the rider with the most 1<sup>st</sup> places in finals in the series
  - Then if a tie still exists, first to the rider with the most second places in finals in the series and so on down to the number of 8<sup>th</sup> places in finals in series.
  - Where a tie still exists riders will be given equal ranking.
- Count back on series points from last to first round.  
I.e. Tie-break for riders with the same total points will be:
  - First to the rider with the highest series points from the last round.
  - Then if a tie still exists, first to the rider with the highest series points from the second last round and so on back to the first round
  - Where a tie still exists riders will be given equal ranking.



- Count back on series points from highest to lowest applicable round.  
Note that unlike other tie-break methods, where a series has “best of” rounds, e.g. series points from the best 6 of the 8 rounds, this tie-break method is only applied to the rider’s best x rounds. For a series not using “best-of”, the method is applied to all rounds of the series.  
I.e. Tie-break for riders with the same total points will be:
  - First to the rider with the highest series points from their best round of the series.
  - Then if a tie still exists, first to the rider with the highest second best round of the series and so on for all applicable rounds.
  - Where a tie still exists riders will be given equal ranking.
- Count back on series points from highest to lowest applicable round plus Rider Ranking.  
Note that unlike other tie-break methods, where a series has “best of” rounds, e.g. series points from the best 6 of the 8 rounds, this tie-break method is only applied to the rider’s best x rounds. For a series not using “best-of”, the method is applied to all rounds of the series.  
I.e. Tie-break for riders with the same total points will be:
  - First to the rider with the highest series points from their best round of the series.
  - Then if a tie still exists, first to the rider with the highest second best round of the series and so on for all applicable rounds.
  - Then if a tie still exists, first to the rider with the highest ranking in the BEM event.
  - Where a tie still exists riders will be given equal ranking.

Note that the selected Tie-Break option is shown on the main menu screen.

**Show Rider’s Sponsor when available.**

When this control box is selected, riders who have had individual sponsor details entered in the BEM file, will have the sponsor detail included in the Series Report.

**Show Rider’s UCI Identity when available.**

Allows the operator to include or exclude the rider’s UCI ID or UCI Code in Series reports.

**Auto Sanity Check before every calculation**

When this control box is selected, the sanity checking for same licence number with different names and the same rider in different classes in different rounds is always performed before calculating series points. Note that the Sanity Check can be performed on demand by clicking on the Sanity Report button on the main menu.

**Series Qualification**

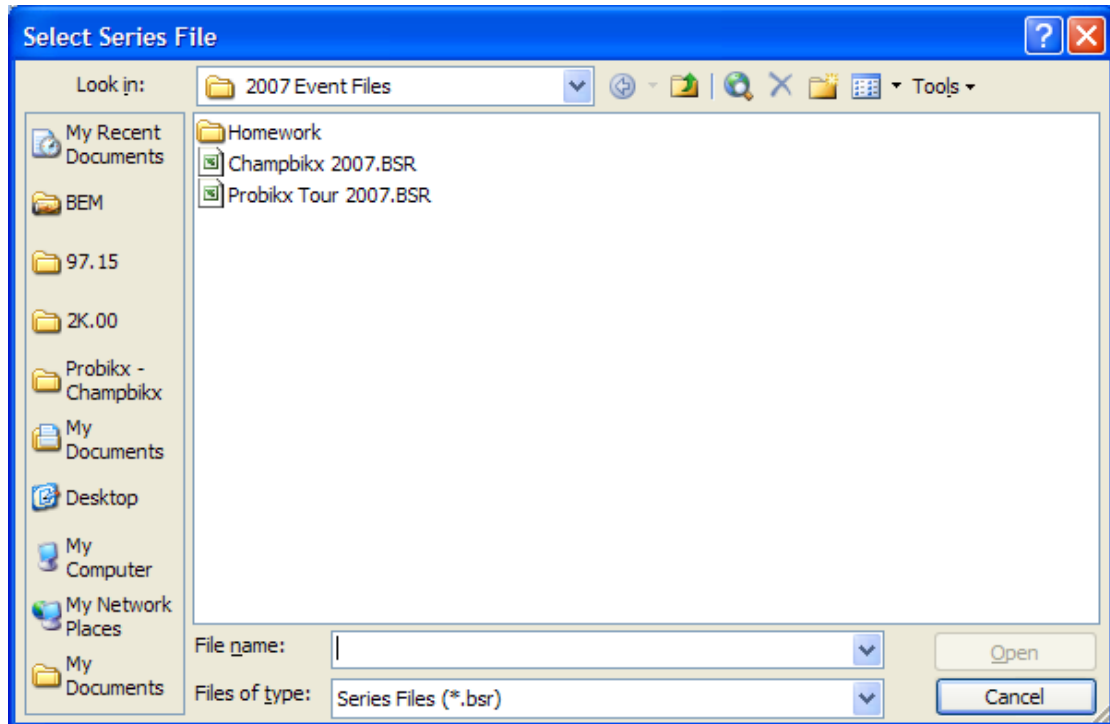
The option selected here determines the series qualification criteria where a for example riders must just enter or enter and compete in the specified rounds to qualify for a series reward.

**Printer Scaling**

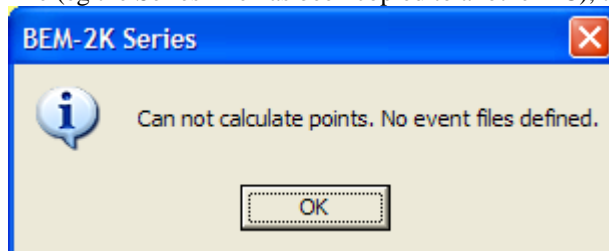
Used to adjust the page size as not all printers are created equal. Typically the value needs to be adjusted to a negative value (say -2) for an inkjet printer as the printable area is often less than for a laser printer.

## Selecting the Series File

A dialogue box is presented to select the ???????.BSR Series file to use. Only one series file can be used at the one time.

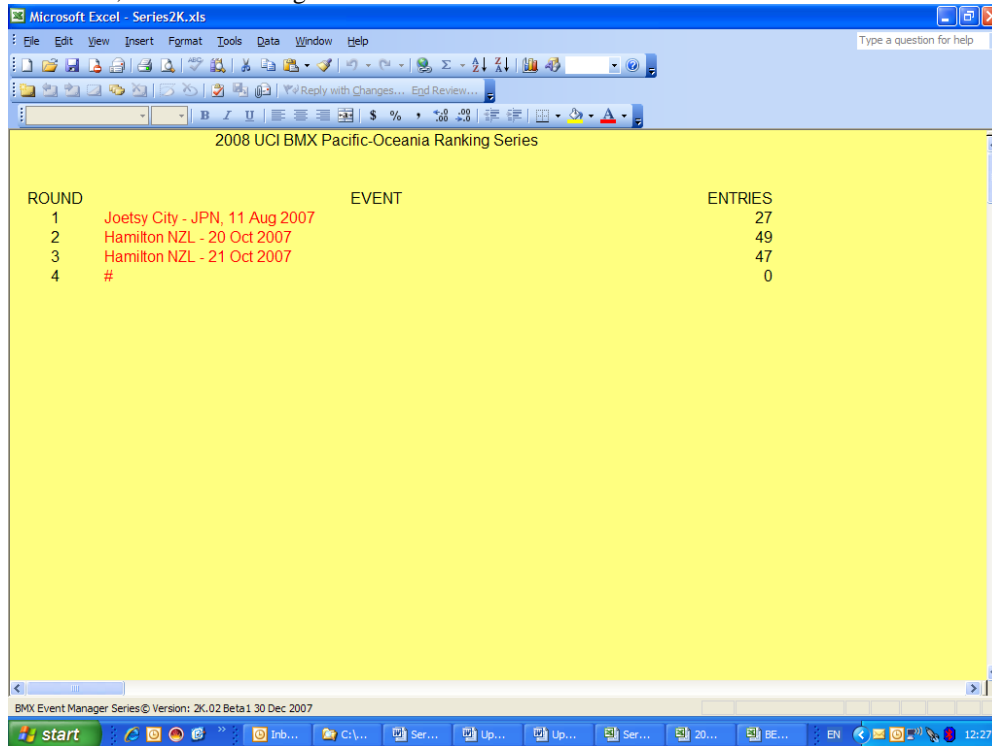


If no Event Files are defined or the Event Files are in a different directory that specified in the Series File (eg the Series File has been copied to another PC), the following message is displayed.



When a new round is added to the series, a summary of the event file is displayed.

When opening a series that already has one or more rounds linked to an event file, each round is shown on the opening screen initially in red font then as each round is processed and series points re-calculated, the font is changed to black.

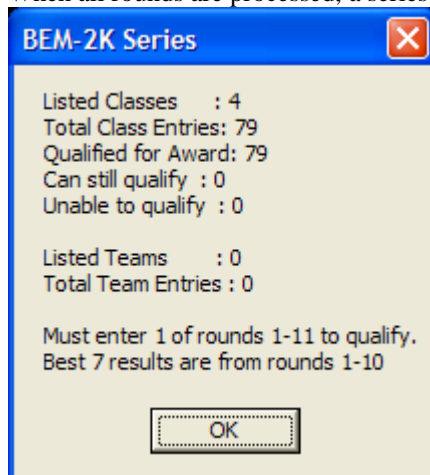


The screenshot shows a Microsoft Excel spreadsheet titled "2008 UCI BMX Pacific-Oceania Ranking Series". The spreadsheet contains a table with three columns: ROUND, EVENT, and ENTRIES. The data is as follows:

| ROUND | EVENT                          | ENTRIES |
|-------|--------------------------------|---------|
| 1     | Joetsy City - JPN, 11 Aug 2007 | 27      |
| 2     | Hamilton NZL - 20 Oct 2007     | 49      |
| 3     | Hamilton NZL - 21 Oct 2007     | 47      |
| 4     | #                              | 0       |

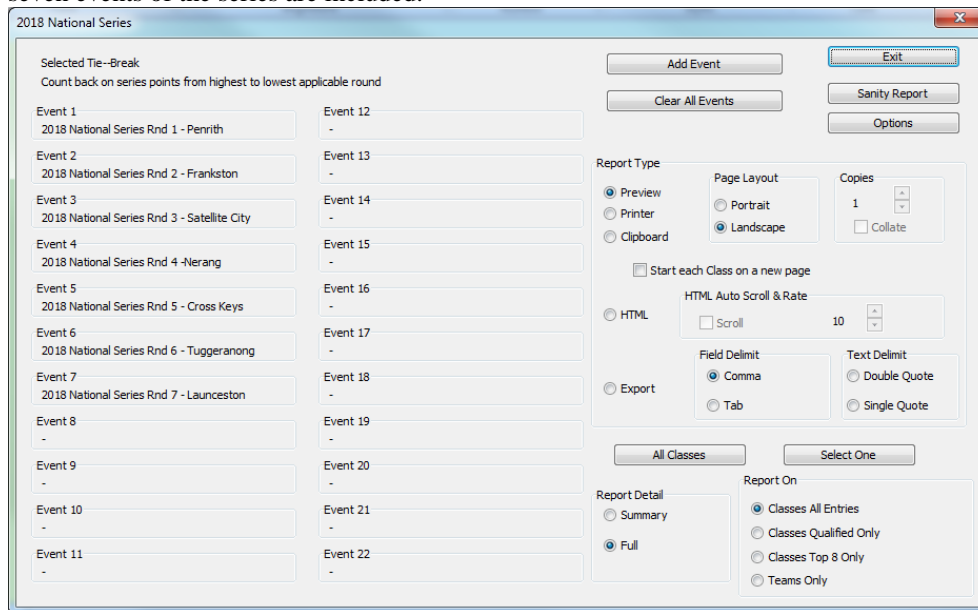
The text in the table is red, indicating that the rounds have not yet been processed. The spreadsheet is displayed in a yellow background. The bottom of the window shows the "BMX Event Manager Series" version 2K.02 Beta 1.30 Dec 2007 and the Windows taskbar.

When all rounds are processed, a series summary message is given.



## Main Menu

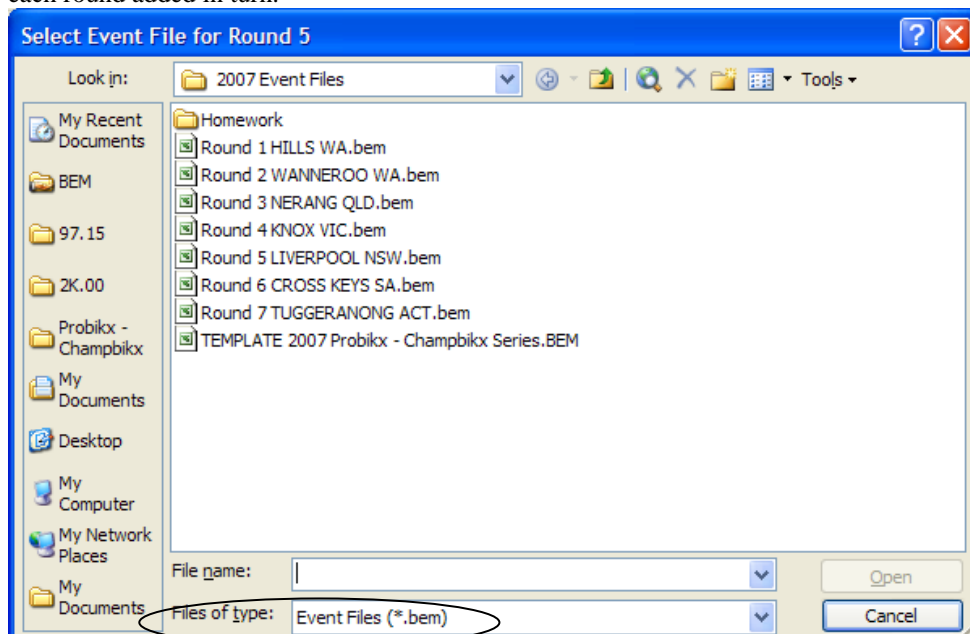
When the point's calculation is complete, the Main Menu is presented. The left column of the Menu lists details of each Event File using the Event Name from the BEM or SportScore file. In this example seven events of the series are included.



## Adding Events

The **Add Event** button is used to add individual Event Files as each round is complete. The caption in the select file dialog indicates the round being selected, Round 6 in the example below.

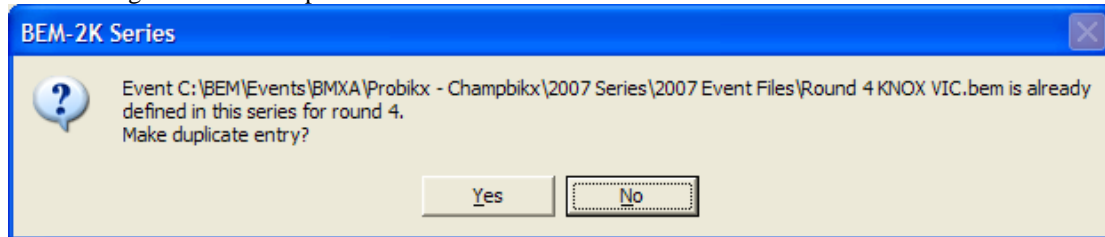
If the wrong Event File is added then all events have to be deleted with the **Clear Events** button and each round added in turn.



Note that the default File Type is a .BEM Event File.

To select a SportScore File type, click on the **Files of type:** dropdown and select SportScore Results File.

Should the selected Event File already be included for a previous round, then a warning is given. The option is provided to do a duplicate entry, mainly for test purposes but could be useful if a particular round is to generate double points.



## Sanity Report

The sanity report button performs a series of tests designed to detect the most common consistency data entry errors across multiple rounds of a series. The report output is always a HTML file irrespective of the output setting.

The initial check is for the same licence number assigned to different riders. Secondary checks are then performed for riders with the same name and different licence numbers (may be legitimate) and where a rider is in different classes in different rounds of the series. The potential problem is shown in red text in the report.

## Series and Team Reports

The report format is adaptive to the use or omission of bonus points and if all rounds or best results from the total rounds count towards the total. This prevents meaningless and potentially confusing information for the riders being included in reports.

### Report Output Group

Buttons are used to select of the output type required. Options are preview on screen, print, clipboard, HTML file or CSV file.

For output types of preview, printed and clipboard the user can select from portrait or landscape orientation. When printed reports are selected, the Copy group is enabled allowing up to ten copies of the report to be printed. Note that when the series consists of more than 10 rounds, landscape format is always used irrespective of the menu selection.

For HTML file output, the file can be made self-scrolling by checking the Y/N box with scroll speed controlled with the rate spinner.

For CSV file output, all data for each rider is output in standard comer delimited format for importation to other programs or for use as a mail merge input to print certificates. Unlike other reports, Rider Classes and Teams must be output separately.

### Report Detail Group

This group enables selection between a summary and a detailed report format. The detailed report for Classes provides individual round points and for Teams provides individual team member details for each rider.

### Report On Group

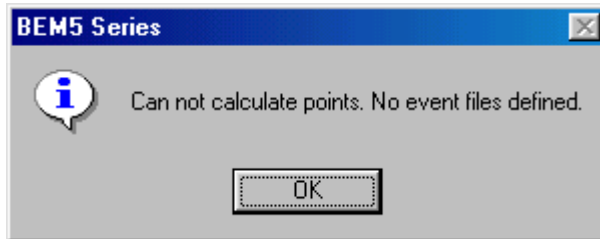
This group enables selection of a Team or Classes report where both Classes and Teams are defined in the one Series File.

For a Classes report, selection of All Entries or only riders who have qualified for a Series Award is possible.

## Error and Information Messages

When the Series File is opened, a number of sanity checks are performed on the user configurable data. Invalid values are reported and must be corrected by exiting from Series and editing the data before proceeding.

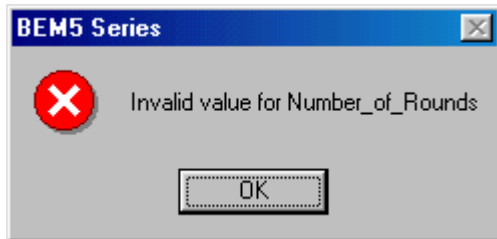
### No Event Files Defined



This message will be seen when first opening a new series file before any individual round files are defined. It can also occur if the folder containing the event files is moved or renamed or running the series on a PC with a different folder set up than the one where the series was first created.

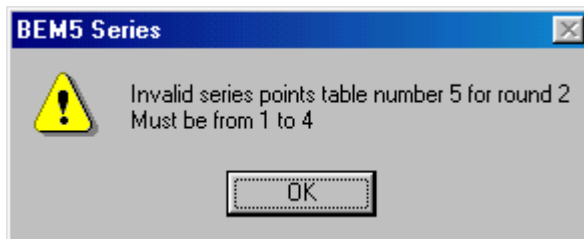
Press Enter and Add Events from the main menu.

### Invalid Number of Rounds



Message indicates the Number\_of\_Rounds setting on the Series sheet is not between 1 and 10. To correct, exit from Series and edit the Series Sheet.

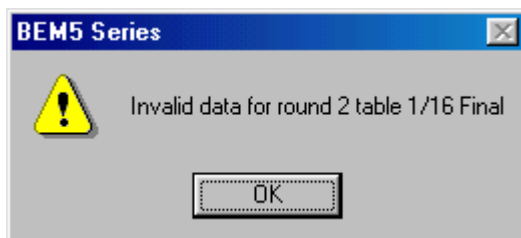
### Invalid Points Table



Four points tables are provided. The sample warning message shows an invalid reference to table number 5.

To correct, exit from Series and edit the Series Sheet.

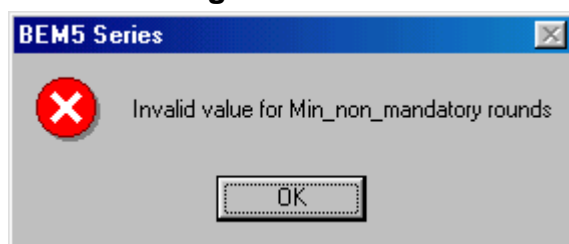
### Invalid Data



Data in points selection for finals must be "N" indicating that series points do not apply to the final or a points table number from 1 to 4. The sample warning message indicates invalid data for 1/16 final in round two.

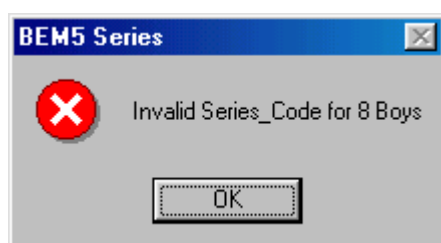
To correct, exit from Series and edit the Series Sheet.

## Invalid Setting for Minimum non Mandatory Rounds



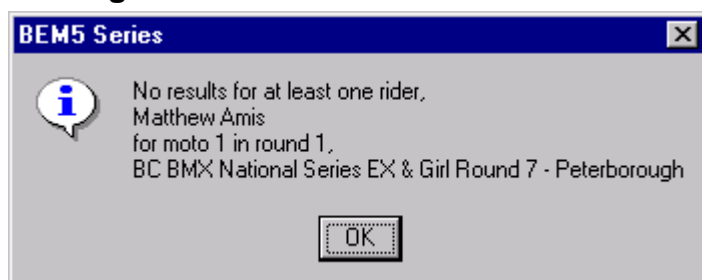
Typically this error indicates the Min\_non\_mandatory rounds setting is not numeric, larger number than the number of rounds in the series or larger than the number of individual rounds in Mandatory\_Rounds [Y/N] set as non-mandatory. To correct, exit from Series and edit the Series Sheet.

## Invalid Series Code



Message indicates the Series\_Code for the 8 Boys Class is not a valid value. Refer to the section on Series\_Code in the Configure the SERIES Worksheet section. To correct, exit from Series and edit the Series Sheet.

## Missing Results



## Appendix 1, Update History

Refer to individual Release and Installation Notes.





## Appendix 2, Relationship between BEM and BSR Data

**CLASS LIST IN BEM FILE (part only)**

| CLASS_NO | Class_Text     | Race_Order | Final_Order |
|----------|----------------|------------|-------------|
| 1        | U5 Sprocket    | 1          | 1           |
| 2        | 5 Sprocket     | 2          | 2           |
| 3        | 6 Sprocket     | 3          | 3           |
| 4        | 7 Sprocket     | 4          | 4           |
| 5        | Sprocket Girls | 5          | 5           |
| 6        | 8 Girls        | 13         | 13          |
| 7        | 8 Boys         | 14         | 14          |
| 8        | 9 Girls        |            |             |
| 9        | 9 Boys         | 15         | 15          |
| 14       | 12 Girls       |            |             |
| 15       | 12 Boys        | 19         | 19          |
| 16       | 13 Girls       |            |             |
| 17       | 13 Boys        | 20         | 20          |

Series\_Class\_No set when rider entered in event.

**DATA in BEM FILE**

Licence No: V3897  
 Plate: 2V  
 First Name: Michael  
 Last Name: Chasteauneur  
 Class: 12 Boys  
 Series Class No: 15  
 Team No:  
 Classification: 1  
 Paid: Y  
 Group: Eastfield  
 Moto1 Gate: 1  
 Moto1 Lane: 4  
 Moto2 Gate: 2  
 Moto2 Lane: 8  
 Moto3 Gate: 1  
 Moto3 Lane: 2  
 Moto4 Gate:  
 Moto4 Lane:  
 Moto5 Gate:  
 Moto5 Lane:

**CLASS LIST IN SERIES FILE (part only)**

| REF_NO | Class_Team_Text |                 |
|--------|-----------------|-----------------|
| 1      | U5 Sprocket     | NO-POINTS-CLASS |
| 2      | 5 Sprocket      | NO-POINTS-CLASS |
| 3      | 6 Sprocket      | NO-POINTS-CLASS |
| 4      | 7 Sprocket      | NO-POINTS-CLASS |
| 5      | Sprocket Girls  | NO-POINTS-CLASS |
| 6      | 8 Girls         | CLASS           |
| 7      | 8 Boys          | CLASS           |
| 8      | 9 Girls         | CLASS           |
| 9      | 9 Boys          | CLASS           |
| 14     | 12 Girls        |                 |
| 15     | 12 Boys         |                 |
| 16     | 13 Girls        |                 |

Series\_Class\_No used to determine Class for series points.

Series\_Class\_No used to determine Class for series points.

MUST match on Series\_Class\_No, Licence\_No, Last Name (and possibly First\_Name also depending on option settings) from EACH round to recognize as the same rider for series points calculation.

**DATA in SERIES FILE**

Microsoft Excel - Series\_Results\_MP\_2002.BSR

| Entry_No | Licence_No | First_Name | Last_Name    | Class   | Series_Class_No | Team_No | Group   |
|----------|------------|------------|--------------|---------|-----------------|---------|---------|
| 59       | 63 V3749   | Sean       | Carlos       | 10 Boy  | 11              |         | Park O  |
| 60       | 120 V3679  | Benjamin   | Carlos       | 15 Boy  | 21              |         | Knox    |
| 61       | 248 V3907  | Grant      | Carra        | 16 Boy  | 23              |         | Sunbur  |
| 62       | 260 V3907  | Grant      | Carra        | 15-16 C | 42              |         | Sunbur  |
| 63       | 87 V3897   | Michael    | Chasteauneur | 12 Boy  | 15              |         | Eastfie |
| 64       | 181 V3897  | Michael    | Chasteauneur | 11-12 C | 18              |         | Eastfie |
| 65       | 121 V4312  | Brenton    | Clarke       | 15 Boy  | 21              |         | Sunbur  |
| 66       | 50 V4104   | Ben        | Clarke       | 9 Boys  | 9               |         | Bendig  |
| 67       | 28 V4007   | Shakeah    | Clearly      | 8 Girls | 6               |         | Bendig  |
| 68       | 97 V4010   | Jay        | Clearly      | 13 Boy  | 17              |         | Bendig  |
| 69       | 182 V4010  | Jay        | Clearly      | 11-12 C | 40              |         | Bendig  |
| 70       | 259 V4010  | Jay        | Clearly      | 13-14 C | 41              |         | Bendig  |
| 71       | 64 V4031   | Brodee     | Clearly      | 10 Boy  | 11              |         | Bendig  |
| 72       | 279 V149   | Chase      | Collins      | 11 Boys | 13              |         | Sheppa  |
| 73       | 16 V4364   | Nathan     | Cook         | 7 Spro  | 4               |         | Park O  |
| 74       | 6 V4579    | Jarrad     | Cook         | 5 Spro  | 2               |         | Park O  |
| 75       | 122 V954   | Shaun      | Craven       | 15 Boy  | 21              |         | Sunbur  |
| 76       | 188 V954   | Shaun      | Craven       | 13-14 C | 41              |         | Sunbur  |
| 77       | 317 V954   | Shaun      | Craven       | 15-16 C | 42              |         | Sunbur  |
| 78       | 74 v3725   | Shaun      | Cuthbert     | 11 Boys | 13              |         | Sheppa  |
| 79       | 183 v3725  | Shaun      | Cuthbert     | 11-12 C | 40              |         | Sheppa  |

### Appendix 3, Relationship between SportScore Results and BSR Data

| <b>SportScore / Times7 Results File Format.</b> |   |
|---|---|
| <b>Event Name</b>                               | Read from Row 6, Column 2   |
| <b>Event Sponsor</b>                            | Read from Row 4, Column 2   |
| <b>Result Field Names</b>                       | The Row containing the Result Field Names is Identified by the first occurrence of "Place" in Column 2 in Rows 9 to 20.   |
| <b>End of Data</b>                              | The end of valid results data is identified by two consecutive blank data fields under the Name heading.<br>Note that the consecutive blank fields search includes the hidden rows between each rider's details.    |
|   |   |
| <b>Field Name</b>                               | <b>Comment</b>  |
| Place   | Finishing place in the event, not the place in the individual class where multiple classes are run together   |
| Race No   | Mandatory requirement that the same competitor will have the same race number in all disciplines that they compete in and that all race numbers will be unique for each competitor.                                 |
| Name  | Required that the name be the same for all disciplines that he rider competes in.<br>E.g. Should not have the same competitor entered as Chris Smith in one discipline and Christopher Smith in another discipline. |
| Team  | School Name or abbreviated version of the School Name.<br>Mandatory requirement that the School Name have exactly the same spelling and format in all disciplines.  |
| Region  | Heading must exist but data is optional.<br>If data is provided then it will appear in the State field in the Team Report   |
| Gender  | Heading must exist but data is optional.  |
| Division  | The combined Gender & Division data must be unique for each Category.<br>The obvious information to provide in the Division field is the Code from the Category list in the Timing Brief                            |
| Time  | Heading must exist but the data is not used in the current design proposal.   |